



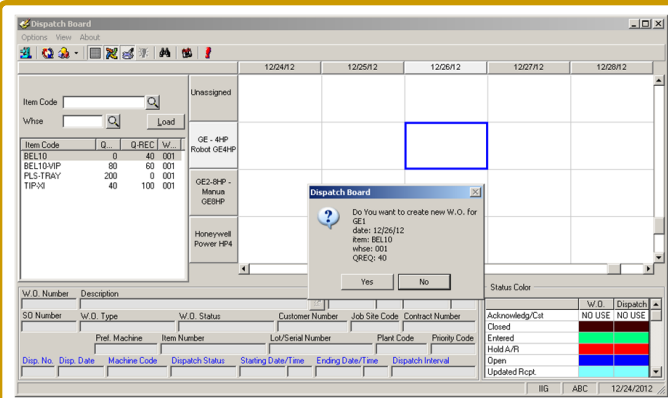
# SAGE 100 ERP



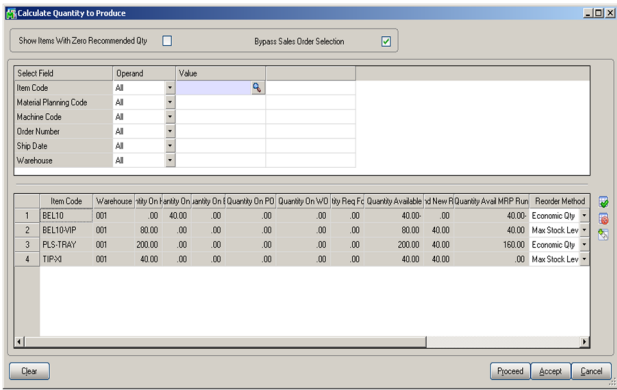
## Material Planning and Production Management The Complete Business Management Solution for Sage 100 ERP

Information Integration Group, Inc. (IIG) is a leading provider of ISV products for small to mid-sized companies since 1991.

Material Planning and Production Management for Sage 100 ERP module is fully integrated with Sage 100 Bill of Materials, Sales Order, Inventory Management and Purchase Order Processing modules.



- Material Planning and Production Management system calculates material requirements for each inventory item and allows for creation of work orders for products based on existing sales order, purchase order and work orders in Sage 100 ERP.
- Components and labor defined in the Sage 100 Bill of Material module are loaded into created work orders. The quantity on work order and required for work order values are updated for created work orders.



- ◆ Closed work orders are loaded into BOM module's Daily Production Entry program.
- ◆ Quantity planned is adjusted based on Sage 100 replenishment / Reorder Method. Material Requirement Calculated is adjusted based on Maximum Stock and Reorder Point settings for each item.
- ◆ Material Planning and Production Management for Sage 100 is available in Sage 100 ERP Premium (SQL) version.

### Material Planning and Production Management module will allow you to...

- ◆ Create production work orders based on sales order demand, manually, or stocking levels defined.
- ◆ Manage production work orders using drag and drop production scheduling board.
- ◆ Calculate material requirement quantity based on replenishment stocking levels and existing sales, purchase order, and work order transactions.
- ◆ Plan purchasing and manufacturing activities to minimize waste.
- ◆ Manage installation of manufactured products.
- ◆ Cost work orders based on actual material, labor and overhead costs.
- ◆ Track Warranty for manufactured parts.
- ◆ Provide streamlined user experience with integrated Manufacturing, ERP and Field Work Order system.



**Supported Platform**  
Sage 100 ERP  
Standard • Advanced • Premium

**Information Integration Group, Inc**  
[www.iigservices.com](http://www.iigservices.com)

**Contact Information:**  
**Address:** 457 Palm Drive  
Glendale, CA 91202  
**Phone:** 877.475.4092  
**Email:** sales@iigservices.com

Material Planning & Production Management